



## PRODUCT DATASHEET

---

# AVEVA<sup>™</sup> Unified Supply Chain: Schedule

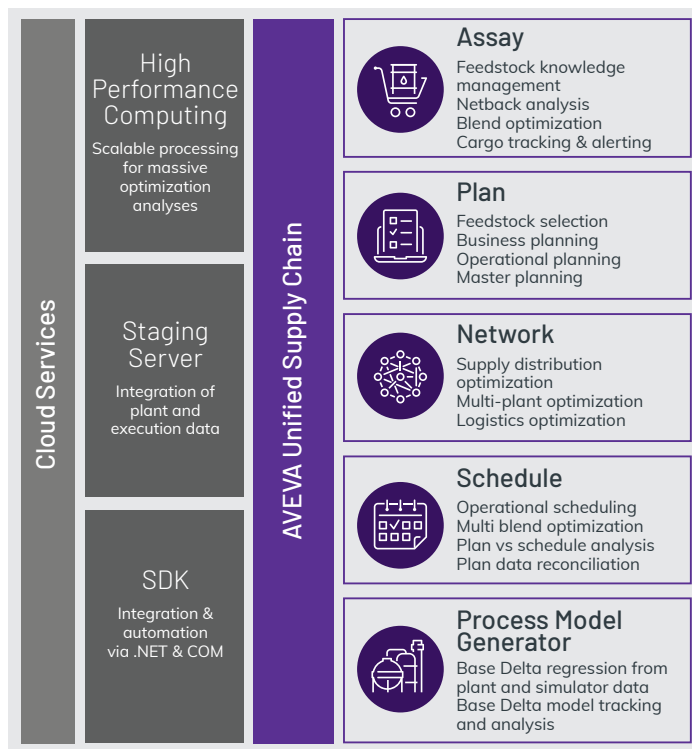
## Schedule with confidence

Ensuring a refinery meets all its requirements while staying close to the operating targets is always a complex task. Schedulers need decision support tools that provide fast, accurate, and transparent information on current and future activities, with the flexibility to solve short-term problems and highlight drift from long-term goals. Schedule, part of AVEVA Unified Supply Chain, allows users to quickly set up and adapt their schedules to meet day-to-day requirements, with the flexibility to meet each user's preferred way of working.

# Key features

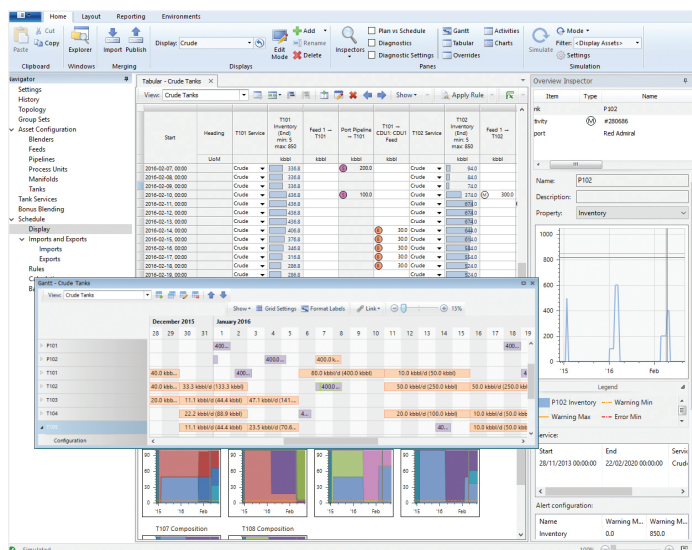
- Easy workflows for defining the schedule, via Gantt, table, or through integration, so users can quickly add or modify activities
- Manage pipelines; track batches, composition, and inventory for crude and products through pipeline systems
- Schedule AI Assistant empowers schedulers at refineries to explore and rank possible scenarios for efficiency, profitability, and emissions. Generate several schedule options in seconds/
- A cloud-enabled solution aligns teams around a single, trusted hub of data
- Optimize unit, pipeline, and product blends; ensure long-term feasible and economically optimal schedules for batch and in-line blends
- Easy-to-configure logic for unit operations; rules and targets reduce manual steps and improve consistency between users and between schedules
- Simple roll-forward workflows; integrate with Historians and Laboratory Information Management Systems (LIMS) to quickly reconcile and baseline the schedule; spot problems across time to highlight model, input, or plant issues
- Unified within AVEVA Unified Supply Chain; shares assays and process models with planning, reducing errors, and integration workflows. Communicate across the enterprise with full visibility by all stakeholders and easy reporting and visualization of decisions.

Schedule AI Assistant empowers schedulers at refineries to explore and rank possible scenarios for efficiency, profitability, and emissions. Schedule AI Assistant can generate several schedule options in just seconds—work that usually takes schedulers days to complete. These options show how plans could be optimized depending on different scheduling and cost scenarios.



Scheduling is at the heart of every successful refinery operation. The ability to translate monthly plans into feasible activity programs that meet commercial, environmental, and operational imperatives is no easy task.

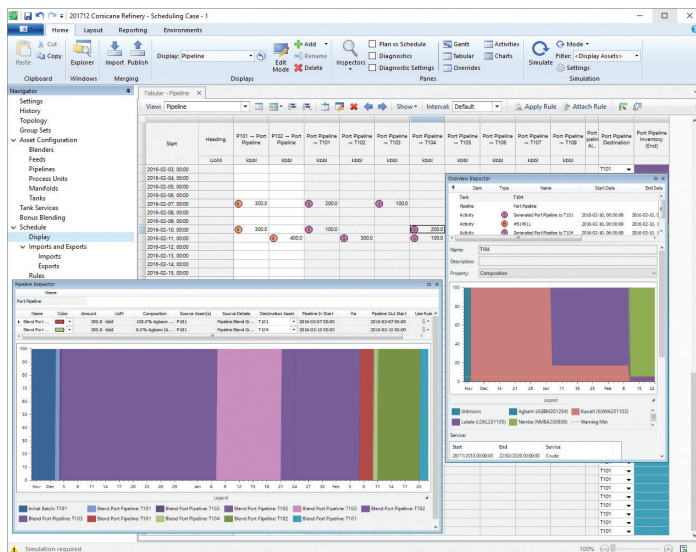
Schedule's cloud-enabled unified supply chain environment allows users to understand the implications their decisions will have on the business as a whole, letting users concentrate on solving practical problems and make the best use of plant assets.



## Easily work with pipelines and blends

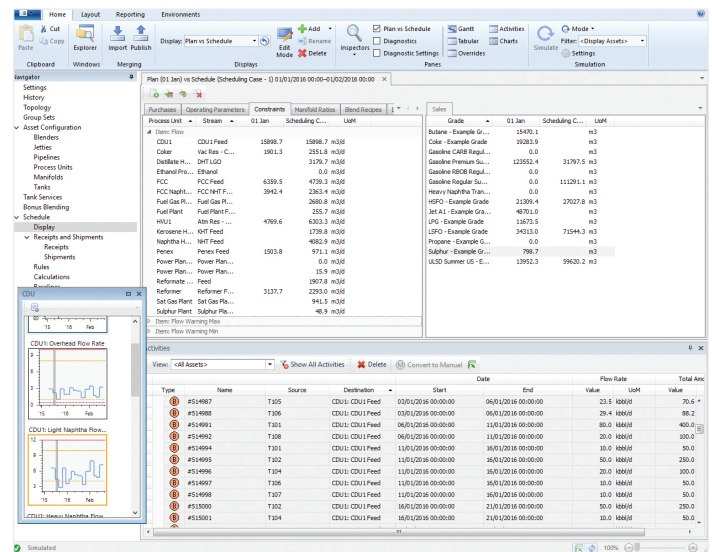
Easy-to-configure functionality for process unit, pipeline, and product blends allows users to quickly set up, adjust, and optimize single and multiple blend activities. This ensures stable and optimal operations across single and multiple timeframes. Economic and operation targeting ensures profitable and realizable schedules. With composition tracking and fast event-based simulation, including both running gauge and recycles, the flexible user interface allows different schedulers to work in tandem, with easy collaboration with one another and across the wider business.

Flexible reporting and integration, with execution systems to automate nominations and movements, help users streamline implementation and activity updates.



## Compare the plan and schedule with actual conditions

Sharing the same plant definition and mathematical engine as AVEVA Unified Supply Chain: Plan ensures consistency between different user groups. Share model updates and targets instantly, with easy comparison of the plan versus the schedule to highlight potential problems. Compare different timeframes and focus on the biggest differences with flexible aggregation of activities and inventories. Transfer qualities and constraints between the plan and the schedule seamlessly to aid operational planning and real-world reactions to market and plant changes. Integration with plant data via the AVEVA Unified Supply Chain staging server allows quick reconciliation of the schedule to understand differences and highlights issues with both modeling and execution.



## AVEVA Unified Supply Chain

Build and share knowledge and experience with AVEVA Unified Supply Chain's single platform, enabling visibility and optimization of the entire supply distribution process. Simple, fast, and secure, it allows each stakeholder to work side by side with shared understanding and shared confidence in decisions and strategies.

This cloud-enabled product enables a remote, fast, flexible, and secure way to increase agility and have all your teams working on the same data. Arrange a demonstration today.

For more information on AVEVA Unified Supply Chain, please visit: [aveva.com/en/products/unified-supply-chain/](https://aveva.com/en/products/unified-supply-chain/)

**AVEVA**

aveva.com

© 2022 AVEVA Group plc and its subsidiaries. All rights reserved.  
AVEVA and the AVEVA logo are a trademark or registered trademark of AVEVA Group plc in the U.S. and other countries.  
All product names mentioned are the trademarks of their respective holders.